

Turf community

Description

- An association of numerous species forming short tufts or turfs in shallow water.
- If present, will be found in first few meters depth around lake edge.
- May comprise of only one species or many.
- Turf communities often <10cm in height.

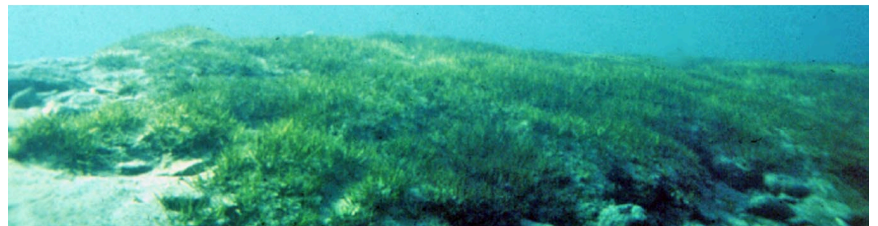
Similar species

Presence in New Zealand

Widespread and common throughout New Zealand.

Management Value

Plant species that make up the turf community in a lake have been identified as a key submerged plant indicator group for the assesement of lake ecological condition using LakeSPI.



Included Species

May include:

Glossostigma submersum
Glossostigmas elatinoides
Lilaeopsis novae-zelandiae
Elatine gratioloides
Limosella lineata
Eleocharis pusilla
Isoetes kirkii