

# Isoetes

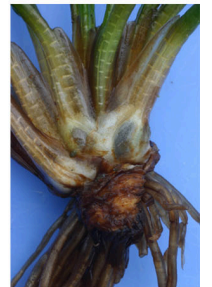
## Description

- Each plant consists of a dense rosette of grass-like hollow leaves that taper to a pointed tip.
- Each clump arises from a distinctive corm, a bulb-like base similar in looks to a miniature onion.
- Leaves are dark green while the base is white.
- Plants can grow singly or in extensive beds (occasionally up 30cm high).
- Can grow to depths exceeding 5m in some South Island lakes.



## Similar species

Not to be confused with other turf plants. Always check for distinctive corm (bulb like) base. *Isoetes* grow as single plants with no connecting rhizome.



## Presence in New Zealand

Throughout New Zealand although they are now rare in northern North Island.

## Management Value

The *Isoetes* species listed here are endemic to New Zealand and have been identified as a key submerged plant indicator for the assessment of lake ecological condition using LakeSPI.

## Included Species

*Isoetes kirkii* (Quillwort)

*Isoetes alpinus*